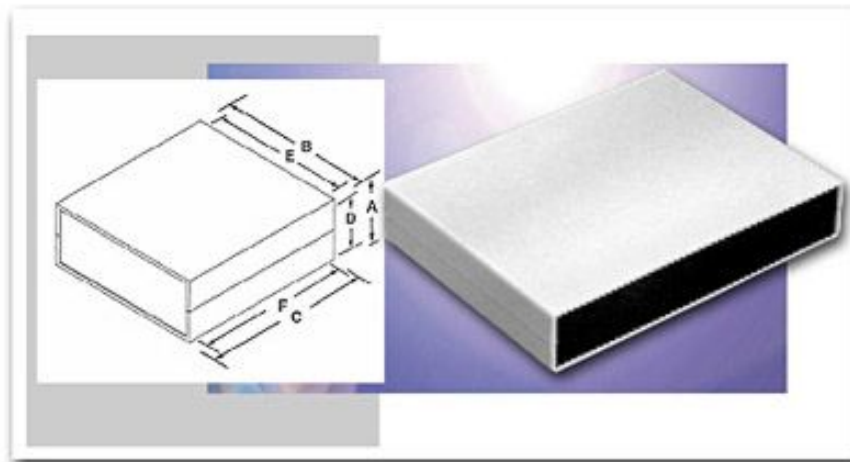


Plastic Boxes  
**Plasticase**  
**Style D**



[Click on Image for Larger View](#)

**(STYLE CHANGE)** These sturdy enclosures come in a variety of styles and sizes and are constructed of high quality plastic materials. Housing designs allow complete accessibility to internal components. Contact BUD factory for optional colors, materials, EMI/RFI shielding and custom modifications.

**Design Features**

Style D Molded in card guides and mounting bosses Available in four versions.

**#1** - Dark gray ABS covers with light gray ABS end panels. UL94V-0 flammability rating, suggested service temperature -40C to 80C

**#2** - Dark gray ABS covers with natural finish aluminum end panels. UL94V-0 flammability rating suggested service temperature -40C to 80C

**#3** - Light gray ABS covers with black ABS end panels. UL94-HB flammability rating, suggested service temperature -40C to 80C

**#4** - Light gray ABS covers with natural finish aluminium end panels. UL94-HB flammability rating, suggested service temperature -40C to 80C

Style D									
Version 1	Drawings	A	B	C	D	E	F	Size	Weight (Ozs.)
PC-11480	<a href="#">PDF</a> <a href="#">DXF</a>	1.38"	5.51"	4.33"	1.18"	5.32"	4.07"	1.20"x 5.31"x .07"	4.6
PC-11481	<a href="#">PDF</a> <a href="#">DXF</a>	1.57"	8.86"	6.50"	1.35"	8.62"	6.24"	1.37"x 8.62"x .07"	12.3
PC-11482	<a href="#">PDF</a> <a href="#">DXF</a>	2.56"	10.24"	7.09"	2.32"	10.00"	6.78"	2.36"x 10.00"x .07"	17.8

Style D

Version 2	Drawings	A	B	C	D	E	F	Size	Weight (Ozs.)
PC-11480-A	<a href="#">PDF</a> <a href="#">DXF</a>	1.38"	5.51"	4.33"	1.18"	5.32"	4.07"	1.20"x 5.31"x .07"	4.6
PC-11481-A	<a href="#">PDF</a> <a href="#">DXF</a>	1.57"	8.86"	6.50"	1.35"	8.62"	6.24"	1.37"x 8.62"x .07"	12.3
PC-11482-A	<a href="#">PDF</a> <a href="#">DXF</a>	2.56"	10.24"	7.09"	2.32"	10.00"	6.78"	2.36"x 10.00"x .07"	17.8

Style D									
Version 3	Drawings	A	B	C	D	E	F	Size	Weight (Ozs.)
PC-11480-LG	<a href="#">PDF</a> <a href="#">DXF</a>	1.38"	5.51"	4.33"	1.18"	5.32"	4.07"	1.20"x 5.31"x .07"	4.6
PC-11481-LG	<a href="#">PDF</a> <a href="#">DXF</a>	1.57"	8.86"	6.50"	1.35"	8.62"	6.24"	1.37"x 8.62"x .07"	12.3
PC-11482-LG	<a href="#">PDF</a> <a href="#">DXF</a>	2.56"	10.24"	7.09"	2.32"	10.00"	6.78"	2.36"x 10.00"x .07"	17.8

Style D									
Version 4	Drawings	A	B	C	D	E	F	Size	Weight (Ozs.)
PC-11480-LGA	<a href="#">PDF</a> <a href="#">DXF</a>	1.38"	5.51"	4.33"	1.18"	5.32"	4.07"	1.20"x 5.31"x .07"	4.6
PC-11481-LGA	<a href="#">PDF</a> <a href="#">DXF</a>	1.57"	8.86"	6.50"	1.35"	8.62"	6.24"	1.37"x 8.62"x .07"	12.3
PC-11482-LGA	<a href="#">PDF</a> <a href="#">DXF</a>	2.56"	10.24"	7.09"	2.32"	10.00"	6.78"	2.36"x 10.00"x .07"	17.8

[DXF](#) Autocad DXF Specifications File  
(Requires CAD software such as AutoCAD)

[PDF](#) Adobe PDF Specifications File



[Download PDF Viewer](#)

[Home](#) | [Company Info](#) | [Online Catalog](#) | [Check Stock](#) | [Distributor/Price](#)

[Reps](#) | [New](#) | [Search](#) | [Contact](#) | [Privacy Policy](#)

## BUD INDUSTRIES INC.

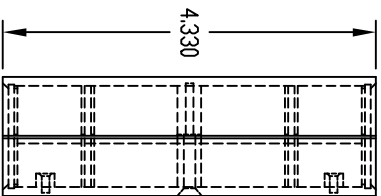
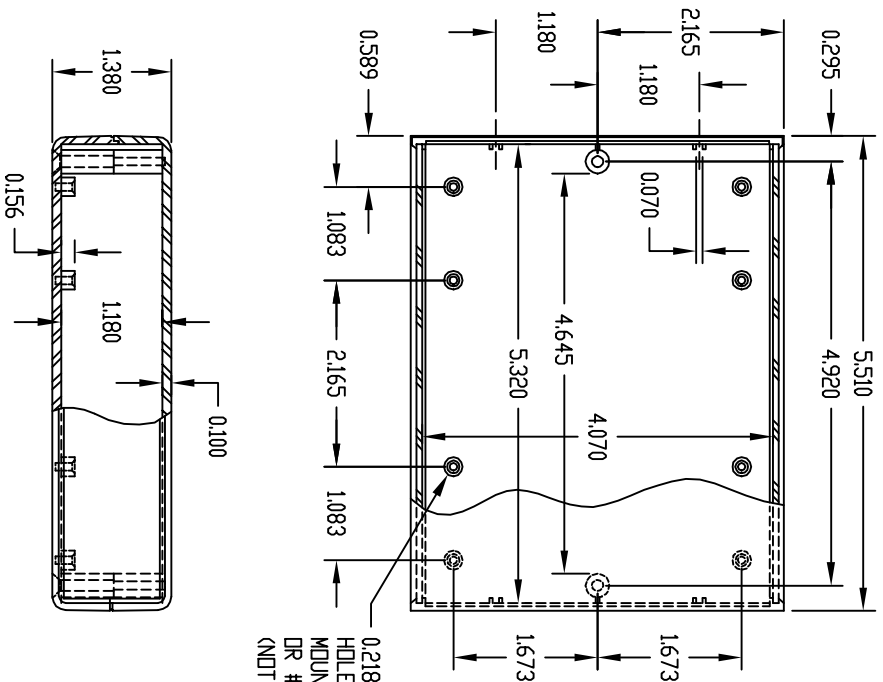
P.O. Box 998  
Willoughby, Ohio 44094  
Phone: 440-946-3200 Fax: 440-951-4015  
E-Mail: [saleseast@budind.com](mailto:saleseast@budind.com)

PART NAME

PLASTICASE (STYLE E)

PART No.

PC-11480 & PC-11480-A & PC-11480-LG & PC-11480-LGA



0.218 DIA. BOSS WITH 0.090 DIA. HOLE x 0.218 DEEP - (8) PLACES MOUNTING BOSSES USE EITHER M2.5 METRIC DR #4 STD. SHEET METAL SCREWS x 0.188" LG. (NOT SUPPLIED)

**MATERIAL & FINISH:**

- (ND SUFFIX) UL94V-0 FLAME RETARDANT ABS
- DARK GRAY PLASTIC COVERS WITH LIGHT GRAY PLASTIC PANELS.
- (SUFFIX -A) UL94V-0 FLAME RETARDANT ABS
- DARK GRAY PLASTIC COVERS WITH NATURAL FINISH ALUMINUM PANELS.
- (SUFFIX -LG) HIGH-IMPACT ABS
- LIGHT GRAY PLASTIC COVERS WITH BLACK PLASTIC PANELS.
- (SUFFIX -LGA) HIGH-IMPACT ABS
- LIGHT GRAY PLASTIC COVERS WITH NATURAL FINISH ALUMINUM PANELS.

TWO (2) M3 x 0.812" LG. SCREWS SUPPLIED FOR ASSEMBLY.

NOTE: ALL DIMENSIONS HAVE ±0.015 TOLERANCE UNLESS OTHERWISE SPECIFIED

